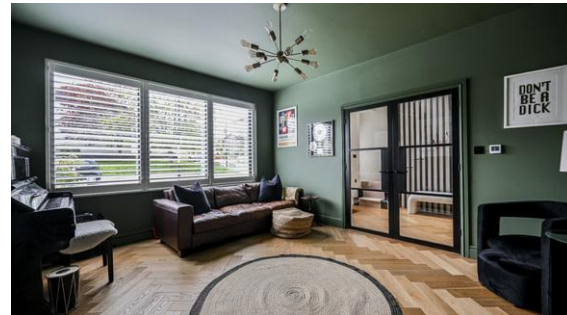
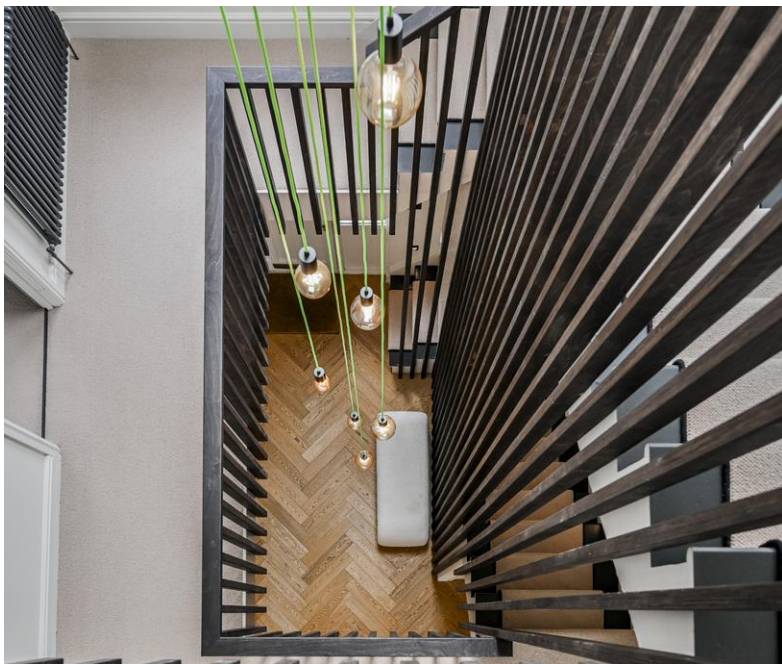




4 Bedroom End Terraced House
Lynton Gardens
London, N11 2NN

Offers in Excess of £1,775,000
<https://www.sealyestates.co.uk/>



Lynton Gardens, London, N11 2NN

Double fronted - high-spec finish throughout, turnkey condition

Architect-designed home with rear extension including skylights & floor to ceiling Crittall-style glazing

Over 10ft floor to ceiling space in open plan kitchen/lounge area

Landscaped garden with side access

Herringbone wood flooring with underfloor heating throughout ground floor

Off street parking with EV charging point Utility room - Underfloor heating in bathrooms - Large wooden shutters

Mood lighting throughout inside and outside

Double glazing & Gas central heating

CTax Band: E – Current EPC Rating awaiting. Old rating before works done E (old rating)

470A Green Lanes London N13 5PA

02036332426

hello@sealyestates.co.uk

<https://www.sealyestates.co.uk/>

Lynton Gardens, N11



Approximate Gross Internal Area = 317.2 m² ... 3414 ft² (excluding garden)

This floor plan is produced in accordance with RICS Property Measurements Standards incorporating International Property Measurement Standards (IPMS: Residential). The plan is for layout guidance only and not drawn to scale unless otherwise stated. Measurements and position of windows, door openings, rooms and any other items are approximate. Whilst all care is taken in the preparation of this plan, if any aspects of this plan are of specific importance, an independent inspection would be advised.